



Folk Dans Fiesta

KA-152 YOU



KAT52-YOU FOLK DANCE FIESTA



3

WHO WE ARE

Synaos Think Tank
Association

4

About Kütahya City

Districts

5

City Overview

History of Province

6

Venue

How get to the Venue

7

Cultural Legacy & Education at Kütahya

Some celebrities who grew up in
Kütahya

8

Very briefly 'Folk Dance Fiesta' project

"Folk Dance Fiesta" is more than a
celebration of movement



Inspired by name from history of the Kütahya city, Synaos Think Tank Association (Synaos Fikir Kulübü SFK) was founded in March 2006 in the Kütahya. Purpose of the establishment of our Think Tank Association (SFKA) is, ensure to people that has intellectual knowledge living in our city bring their knowledge and experience in their field for urban and intellectual development together and create a platform where they can exchange ideas, collaborate on innovative projects, and contribute to the social, cultural, and economic advancement of Kütahya. Our association aims to foster intellectual discussions, support research and development initiatives, and organize events that bring together experts, academics, and professionals from various disciplines to shape the future of our city. As part of our efforts to implement impactful projects, we established a dedicated communication team within our association. This team collects and organizes relevant data and builds strong networks both nationally and internationally. By actively engaging with individuals and institutions experienced in project development, we enhance our capacity to design and manage collaborative initiatives. Our group also maintains an active online presence to reach potential partners across Turkey and abroad, enabling us to take part in a variety of meaningful, forward-looking projects.

who we are



strongly
moment
ter at
men

ABOUT KÜTAHYA CITY

Kotiacon, Synaas

Kütahya is a historic province in western Turkey, covering an area of 11,889 km² with a total population of approximately 573,000 (2017 estimate). The city center is home to around 260,000 residents.

Districts

The province consists of 13 districts, including the city center:

Altıntaş, Aslanapa, Çavdarhisar, Domaniç, Dumlupınar, Emet, Gediz, Hisarcık, Pazarlar, Şaphane, Simav, Tavşanlı, and Kütahya City Centre.

Sites of Interest

Kütahya is rich in natural beauty and historical landmarks. Notable sites include:

Natural Attractions: Çamlıca Forest, Mount Murat, Hisarlıktepe, Ebem Pine Grove, Gölcük Plateau, Nafia Spring, Harlek and Yoncalı Thermal Springs, Eynal Hot Springs.

Historical Sites: Aizanoi Ancient City, Kütahya Castle, Grand Mosque, Vacidiye Medrese (old theological school), and Kütahya Museum.

Cultural: Dumlupınar Monument and traditional Ottoman-style houses, particularly along Germiyan Street.



KÜTAHYA LIES ALONG THE PORSUK RIVER AT AN ELEVATION OF 930 METERS. ITS ANCIENT NAME WAS COTYAEUM, A ROMAN TITLE THAT IS STILL RECOGNIZED TODAY IN HISTORICAL TEXTS. THE CITY IS A MAJOR CENTER FOR TRADITIONAL CERAMICS AND TILES, FAMED FOR ITS COLORFUL GLAZED POTTERY—A CRAFT PASSED DOWN FOR GENERATIONS.



CITY OVERVIEW

merhaba



Modern industries in Kütahya include sugar refining, leather tanning, nitrate processing, and meerschaum carving.

The region's agricultural output includes cereals, fruits, and sugar beet. Animal husbandry and lignite mining are also important to the local economy.

Kütahya is well-connected by road and rail to major Turkish cities including Balıkesir (250 km), Konya (450 km), Eskişehir (70 km), and Ankara (300 km). The province's largest town after the center is Tavşanlı.



History

Kütahya's roots stretch back to the 3rd millennium BCE. Known as Kotiaion (the city of the goddess Kotys), it played a significant role along trade routes between the Marmara region and Mesopotamia. Throughout history, the city was part of the Phrygian kingdom, the Roman Empire, the Byzantine Empire, and later the Seljuk and Ottoman Empires.

Significant historical events include:

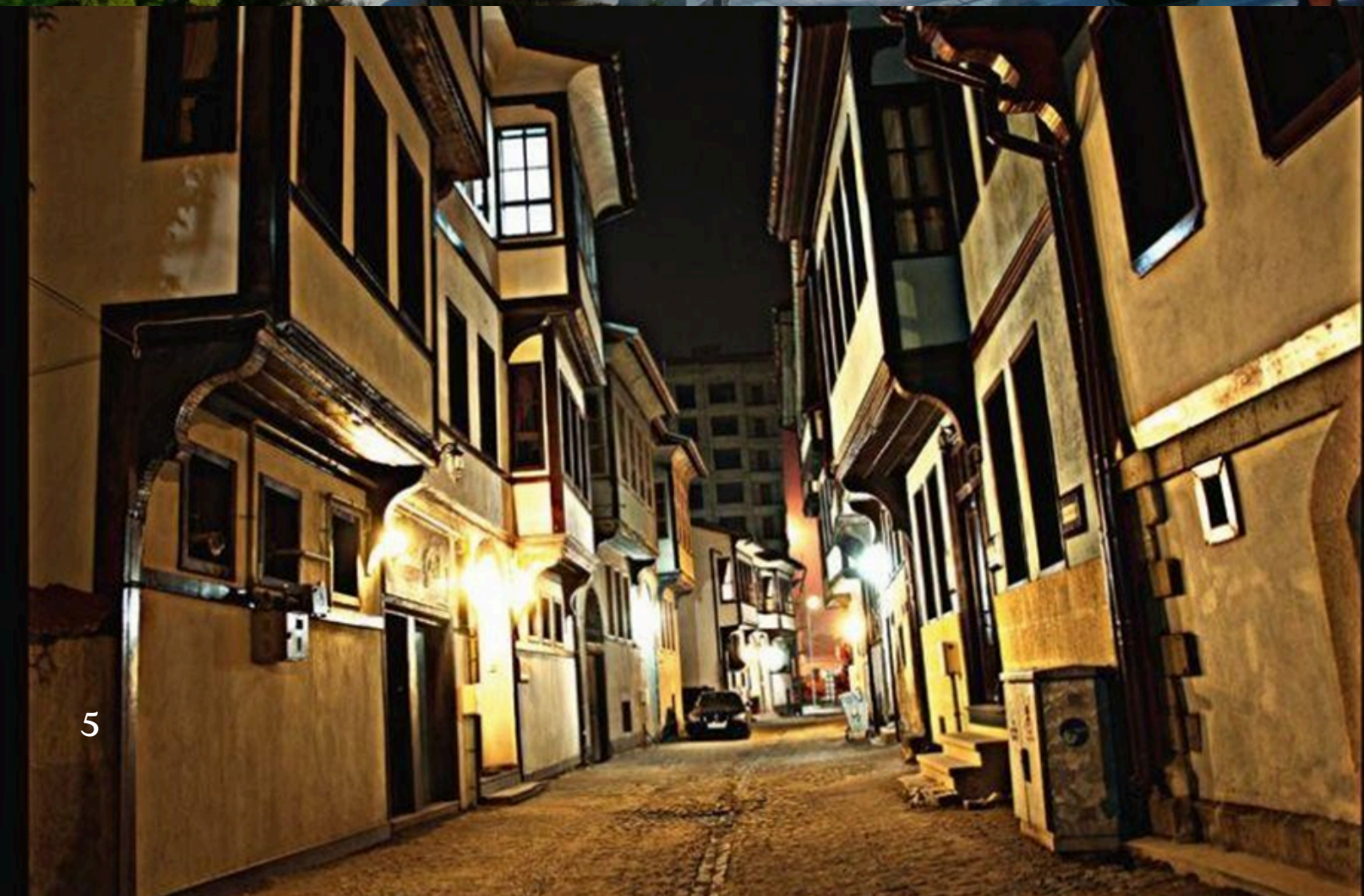
Becoming the capital of the

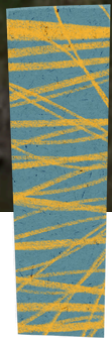
Germiyanid principality in 1302

Integration into the Ottoman Empire in 1428

Emergence as a key center for ceramic arts after tile-makers from Tabriz were resettled here in 1514 by Sultan Selim I.







Cultural Legacy + Education

Kütahya Dumlupınar University, with its main and Germiyan campuses, plays a vital role in the city's academic and cultural life. The region is also home to many traditional wooden Ottoman houses, reflecting a rich architectural heritage.

Notable People from Kütahya

Aesop - Ancient Greek storyteller of fables (believed birthplace)

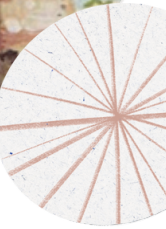
Lajos Kossuth - Hungarian political leader and freedom fighter

Komitas Vardapet - Armenian priest, composer, and ethnomusicologist



Erasmus+

Very Briefly 'Folk Dance Fiesta' project



"Folk Dance Fiesta" is more than a celebration of movement—it's a heartfelt journey into the soul of different cultures. Through the rhythms and steps of traditional folk dances, participants are invited to connect not only with unfamiliar traditions but with the people and stories behind them. Each dance becomes a shared language, offering moments of joy, discovery, and deep reflection. As participants learn from one another, they begin to see the beauty in both their differences and common ground. In this warm and welcoming space, barriers fade, friendships form, and a genuine appreciation for diversity blossoms—bringing to life the spirit of the Inclusion and Diversity Strategy, and reminding us all that unity grows where hearts are open.



VENUE



Participants will be accommodated at Grand Çınar Hotel, located just 1 km from the city center. Rooms will be shared by three people and include 24-hour hot water (with shower facilities) and towels. Breakfast and other meals will be served in the hotel's restaurant. A floor of the hotel will be reserved exclusively for the project: tea, coffee, and water will be available, and participants will also be able to use a large screen in the common room for project work.

Transportation from Zafer Airport to the hotel will be provided by shuttle service.

In case of any emergency, here is the hotel's location: [Google Maps](https://maps.app.goo.gl/E8gnsVBr8v3YzbK49)

<https://maps.app.goo.gl/E8gnsVBr8v3YzbK49>

Address: Cumhuriyet Mahallesi, Haymeana Caddesi, No:51, Pk:43020 Merkez / KÜTAHYA



HOW TO GET TO THE VENUE?



"If you're arriving from abroad, it's very likely that your first stop in Türkiye will be Istanbul, which has two main airports:

- Istanbul Airport (IST)
- Sabiha Gökçen Airport (SAW)

Please note that flights to Kütahya Zafer Airport only operate from Istanbul Airport (IST). There are currently no direct flights from Sabiha Gökçen to Kütahya. Therefore, we highly recommend booking your international flight to arrive at Istanbul Airport.

If you arrive at Sabiha Gökçen, you can still reach Istanbul Airport by using the Havabus Pendik shuttle. These buses depart from the open parking area of the arrivals floor and will take you directly to Istanbul Airport.

Alternatively, if you plan to travel from Sabiha Gökçen to Kütahya by bus, you will need to reach one of Istanbul's intercity bus terminals:

- Harem Bus Terminal (approx. 35 km from SAW)
- Esenler Bus Terminal (approx. 53 km from SAW)

You may also travel to Kütahya by train. The nearest train station to Sabiha Gökçen is Pendik Station, which is about 14 km away.

If you choose to travel to Kütahya by bus or train, we will be happy to pick you up from the terminal or station and bring you to the hotel.

All further details will be shared in the project's WhatsApp groups.

We wish you a safe and pleasant journey in advance!



Project Objectives



"Folk Dance Fiesta" is an ambitious and vital project aimed at addressing some of the most pressing issues faced by young people in Europe today. At the heart of our initiative is the desire to use traditional folk dances and creative arts as powerful tools to overcome cultural divides, promote social inclusion, and foster a sense of shared European identity.

The objectives of this project, specifically from a youth work practice perspective, are designed to empower young participants by providing them with the skills, knowledge, and opportunities needed to thrive in an increasingly diverse and interconnected Europe.

EMPOWER
MARGINALIZED YOUTH
THROUGH CULTURAL
EXPRESSION
PROMOTE SOCIAL
INCLUSION AND
INTERCULTURAL
DIALOGUE
CHALLENGE AND
DISMANTLE
STEREOTYPES



REIMBURSEMENT



Further Steps

The total reimbursements will be transferred to the account of the sending association, then will be allocated among participants according to real expenses on reimbursement forms.

The reimbursement will be done for the real expenses spent on travelling under the travel budget limits defined by Erasmus + programme.

Bank transfer commissions will not be covered by the host organization.

The total reimbursements will be transferred to the account of the sending association, then will be allocated among participants according to real expenses on reimbursement forms.

The reimbursement will be done for the real expenses spent on travelling under the travel budget limits defined by Erasmus + programme.

Bank transfer commissions will not be covered by the host organization.



Youth Exchange



PARTNER ORGANISATIONS

TÜRKIYE: SYNAOSTHINKTANK ASSOCIATION

HUNGARY: CHANGEMAKER

ROMANIA: ASSOCIATIA TOGETHER

SLOVAKIA: STUDENT ERA

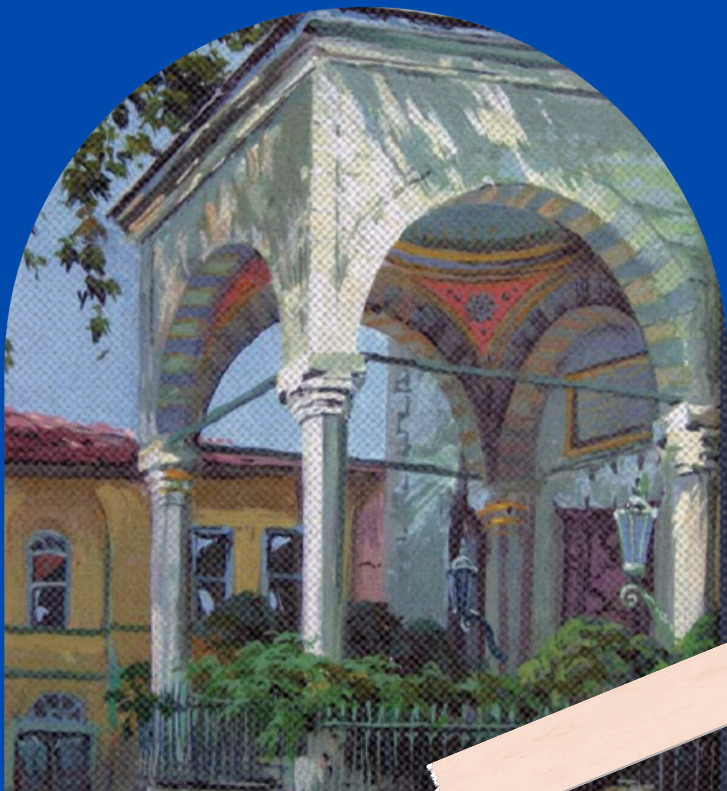
FOLK DANCE FIESTA



Folk Dans Fiesta



lee





FOLK DANCE FIESTA KA152-YOU



www.synaostfikirkulubu.org

synaostthink@gmail.com

